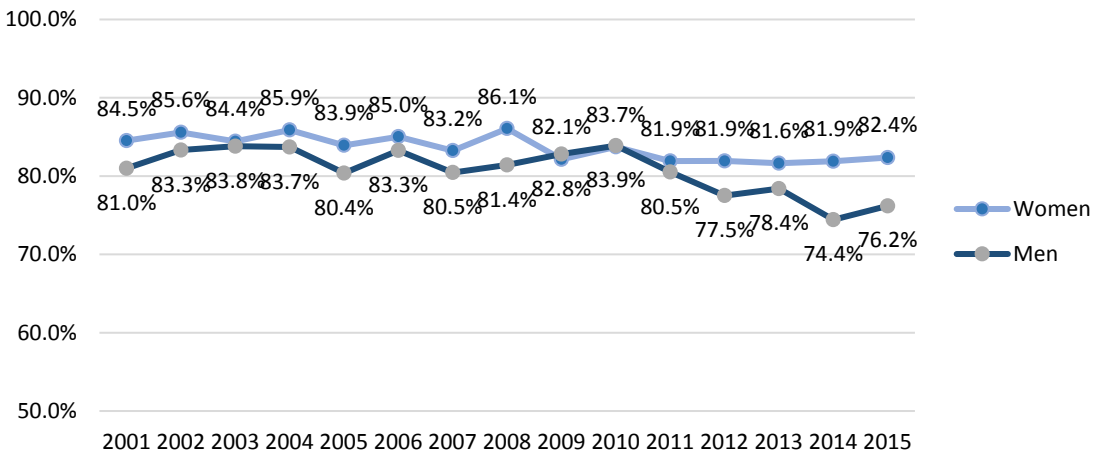
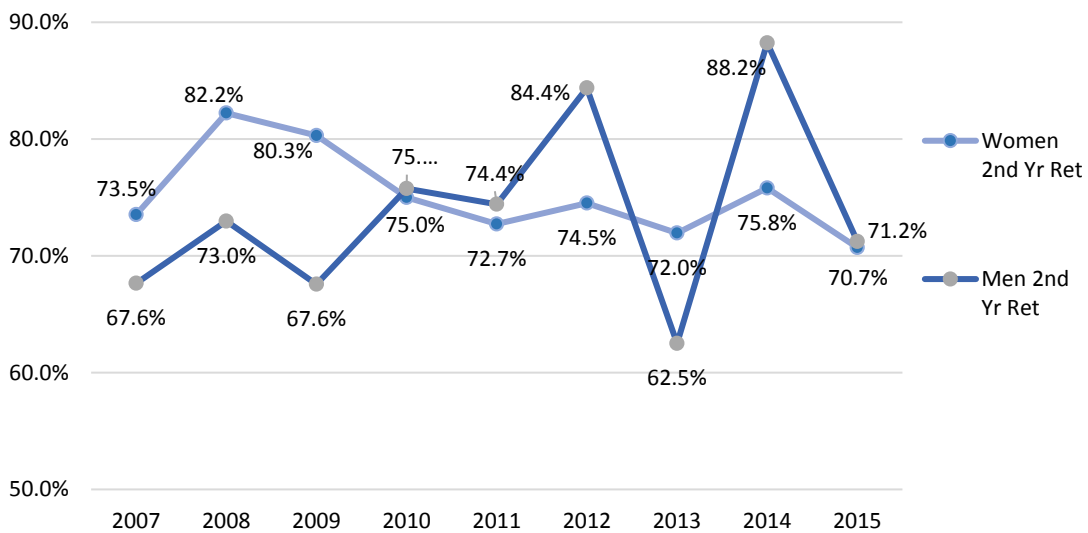


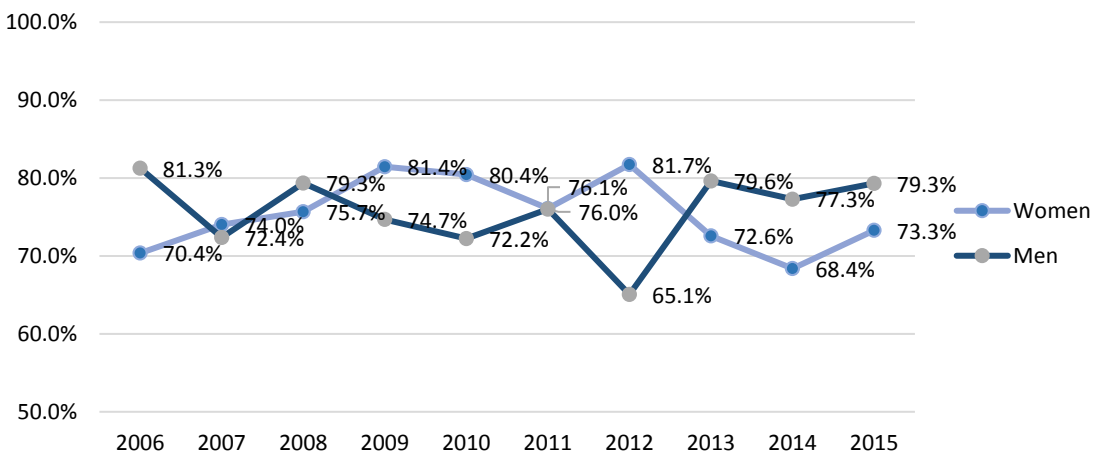
Pullman Campus - Freshman to Sophomore Retention (First-time, Full-time)



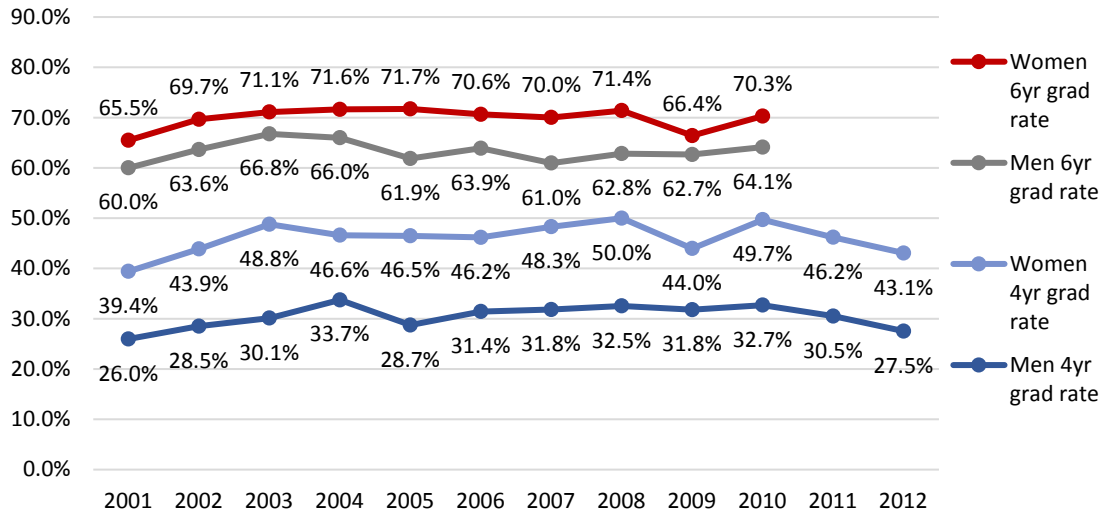
Tri-Cities - Freshman to Sophomore Retention (First-time, Full-time)



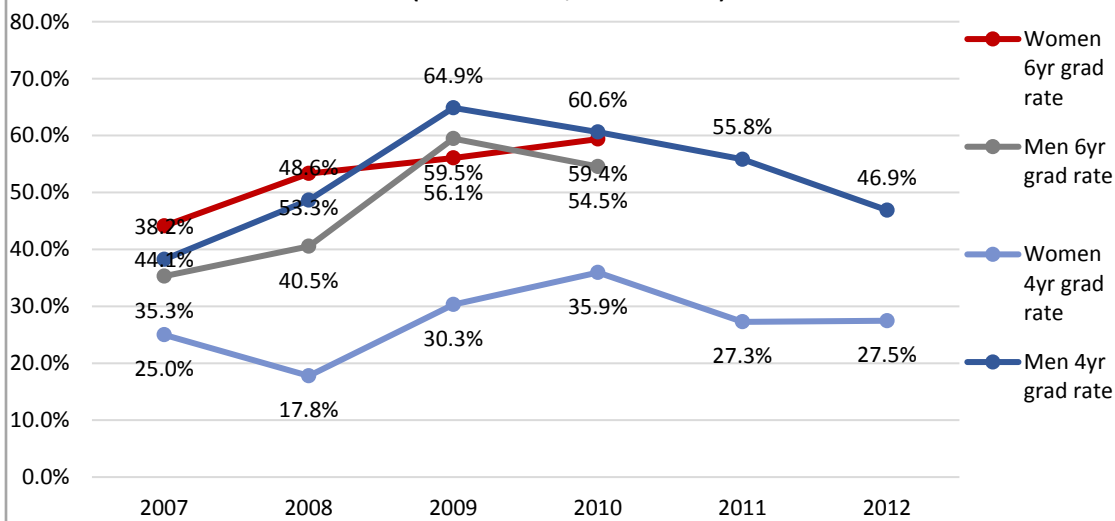
Vancouver Campus - Freshman to Sophomore Retention (First-time, Full-time)



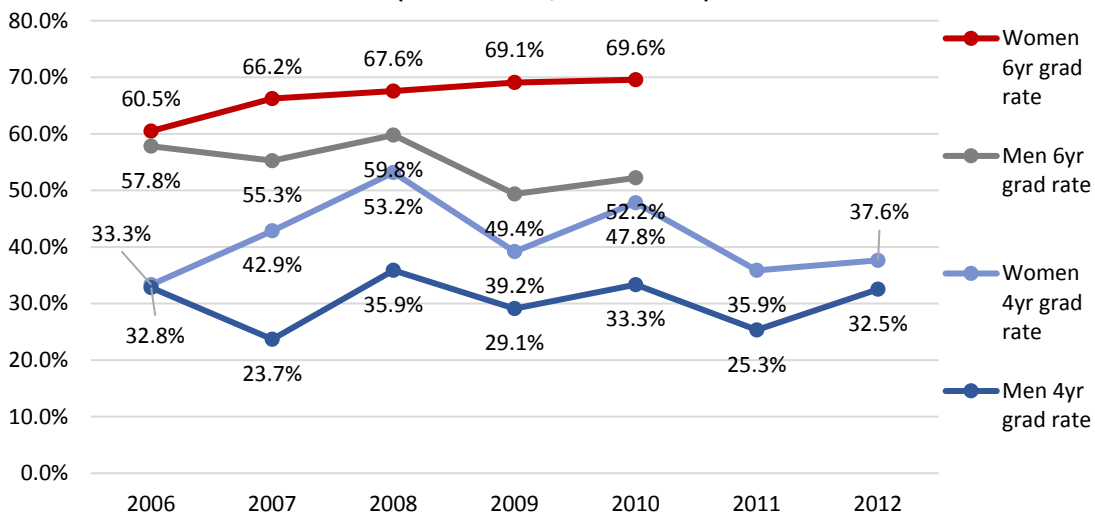
Pullman Campus - 4yr and 6yr Graduation Rate
(First-time, Full-time)



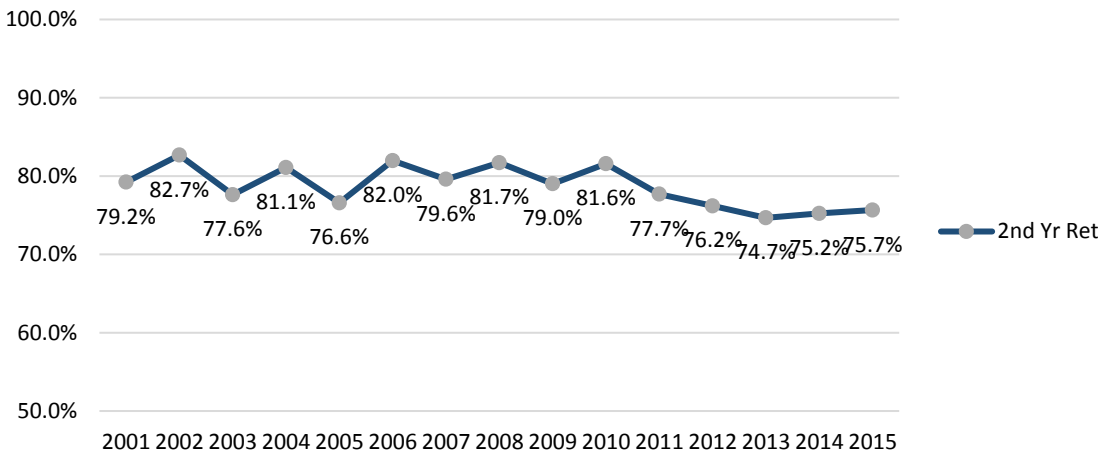
Tri-Cities Campus - 4yr and 6yr Graduation Rate
(First-time, Full-time)



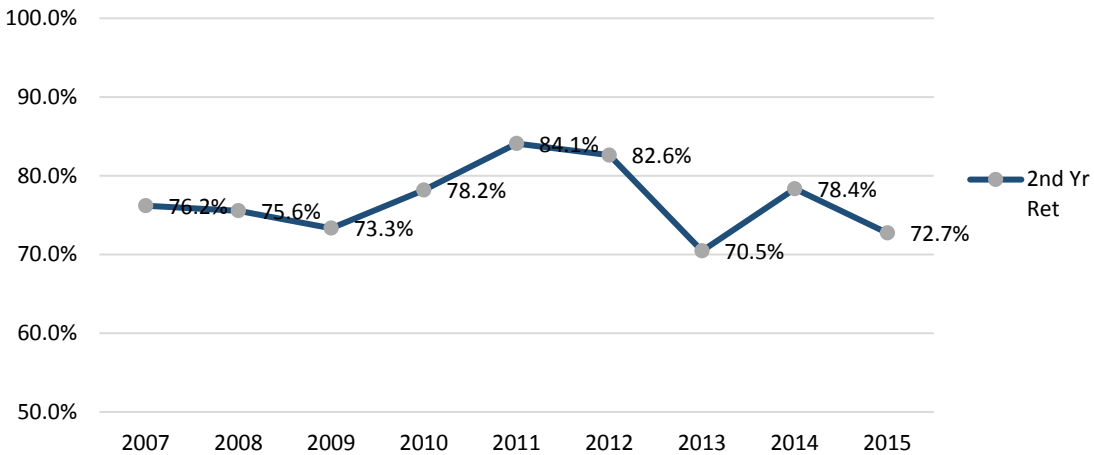
Vancouver Campus - 4yr and 6yr Graduation Rate
(First-time, Full-time)



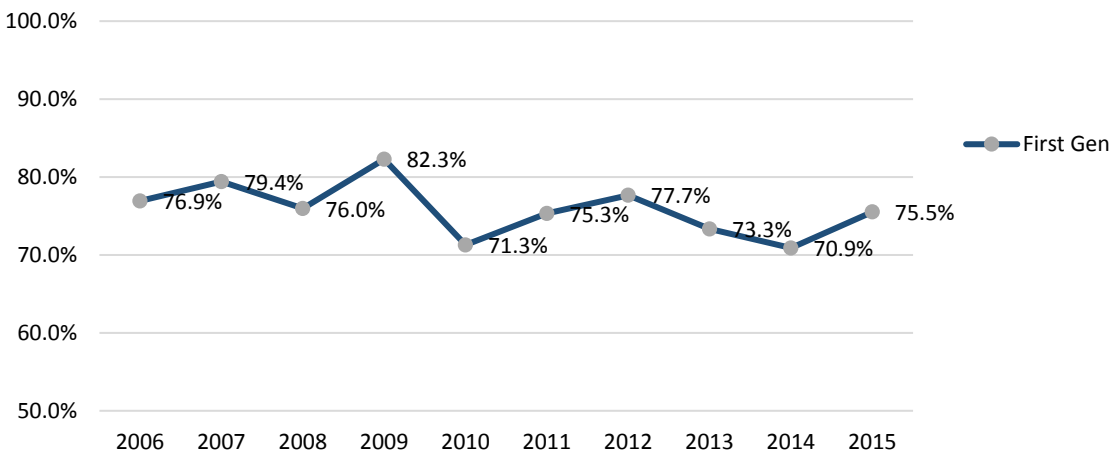
Pullman Campus - Freshman to Sophomore Retention (First Generation - First-time, Full-time)



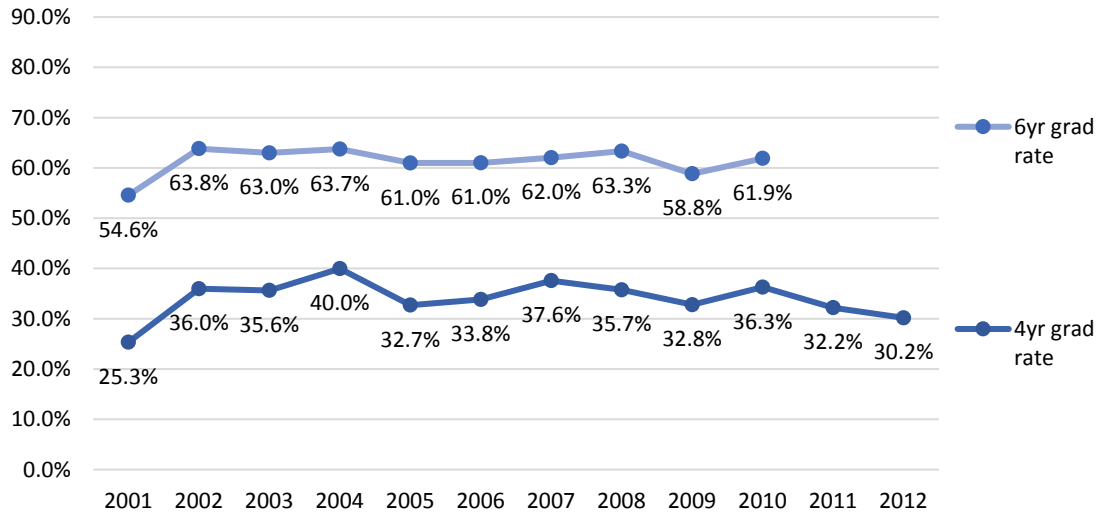
Tri-Cities - Freshman to Sophomore Retention (First Generation - First-time, Full-time)



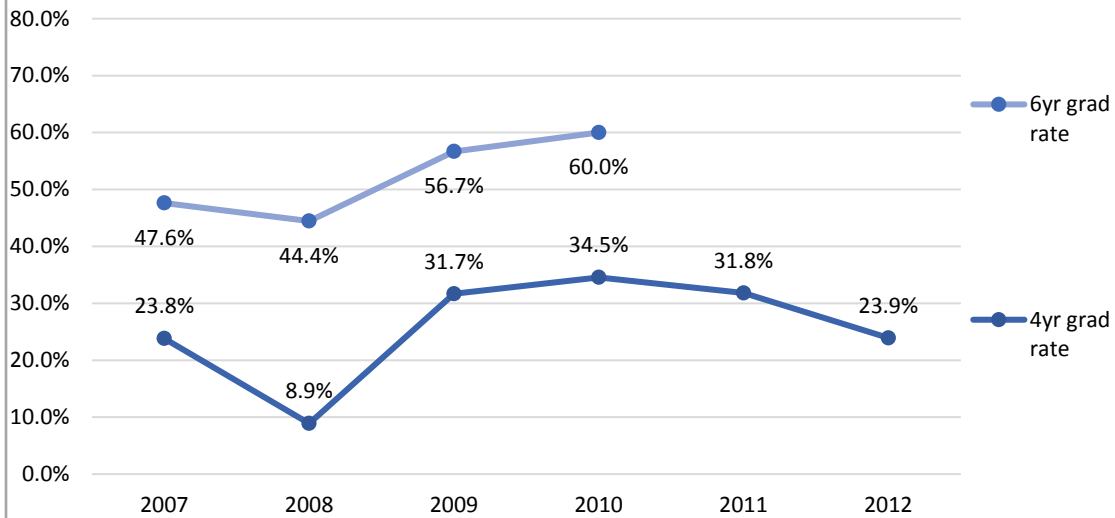
Vancouver Campus - Freshman to Sophomore Retention (First Generation - First-time, Full-time)



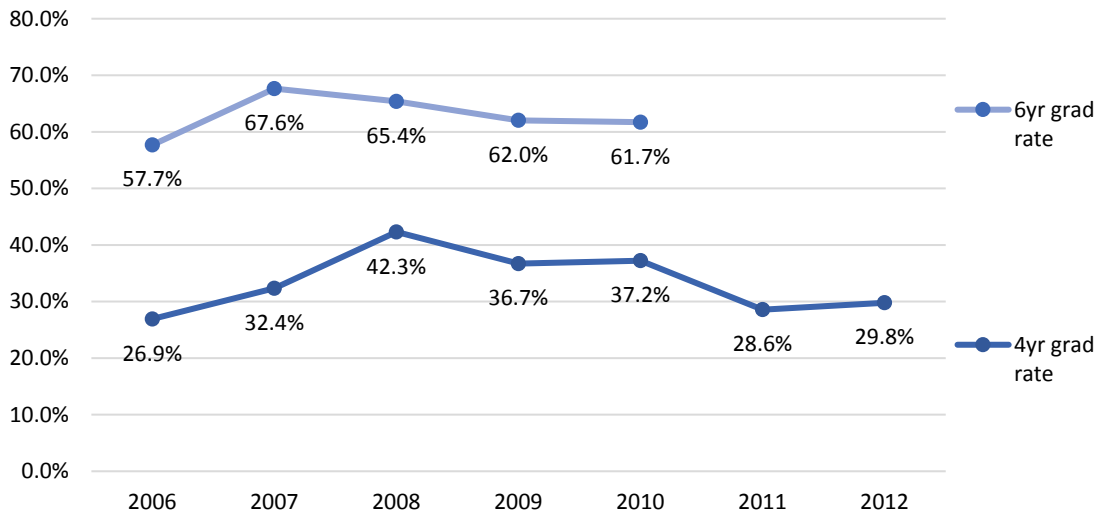
Pullman Campus - 4yr and 6yr Graduation Rate
(First Generation - First-time, Full-time)



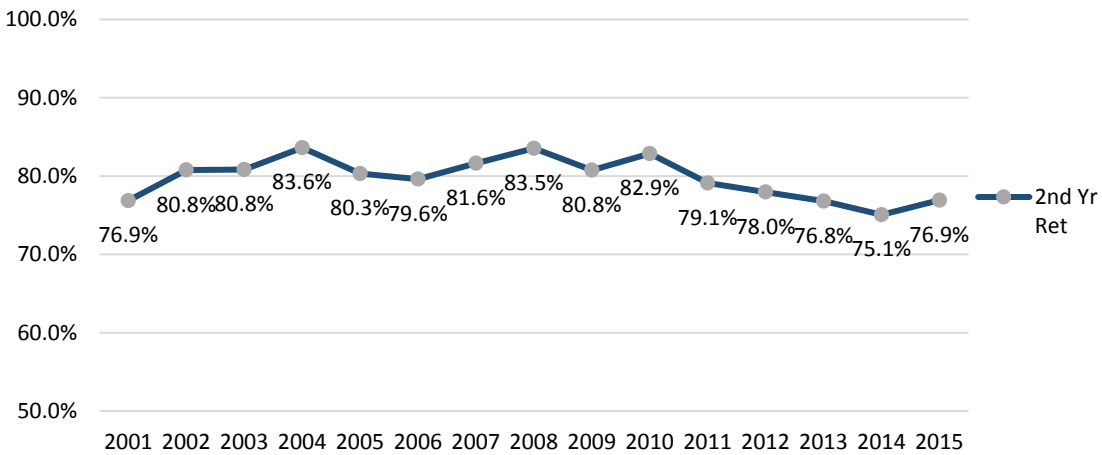
Tri-Cities Campus - 4yr and 6yr Graduation Rate
(First Generation - First-time, Full-time)



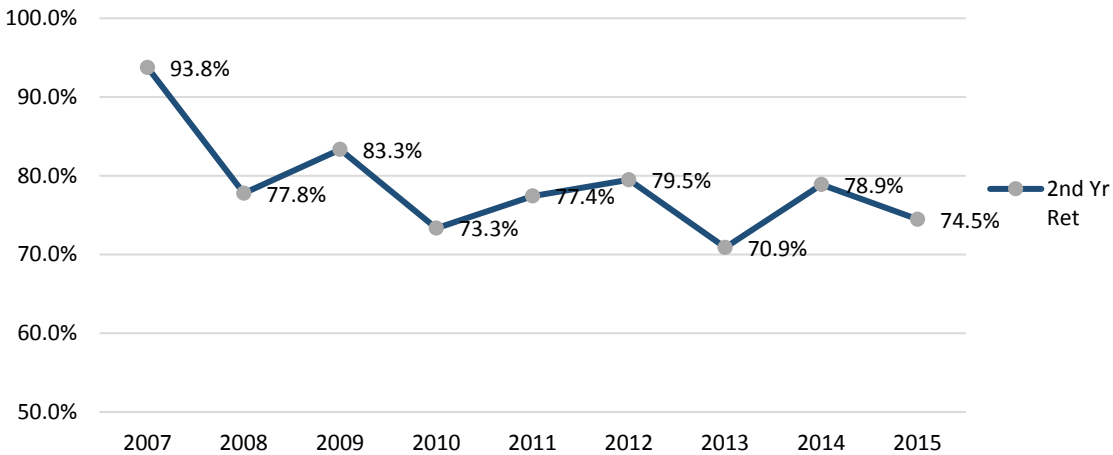
Vancouver Campus - 4yr and 6yr Graduation Rate
(First Generation - First-time, Full-time)



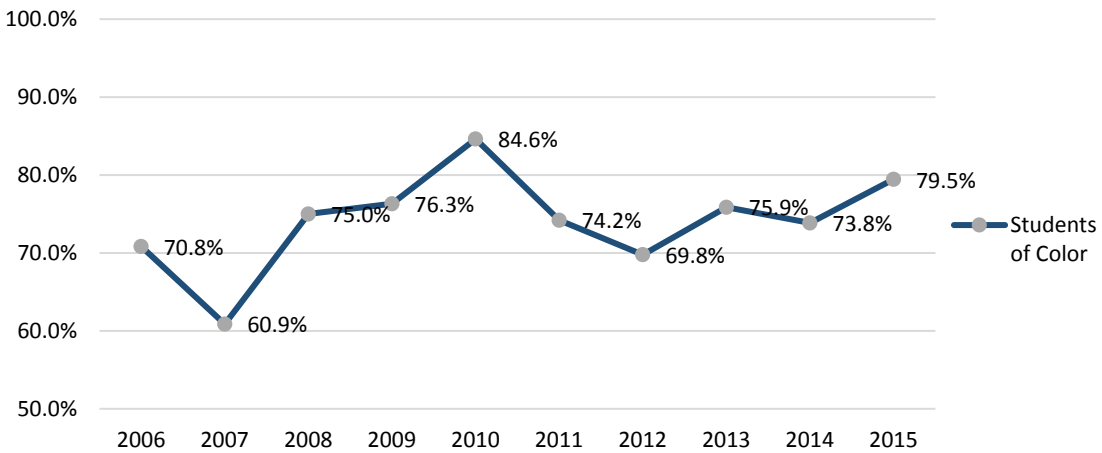
Pullman Campus - Freshman to Sophomore Retention (Students of Color - First-time, Full-time)



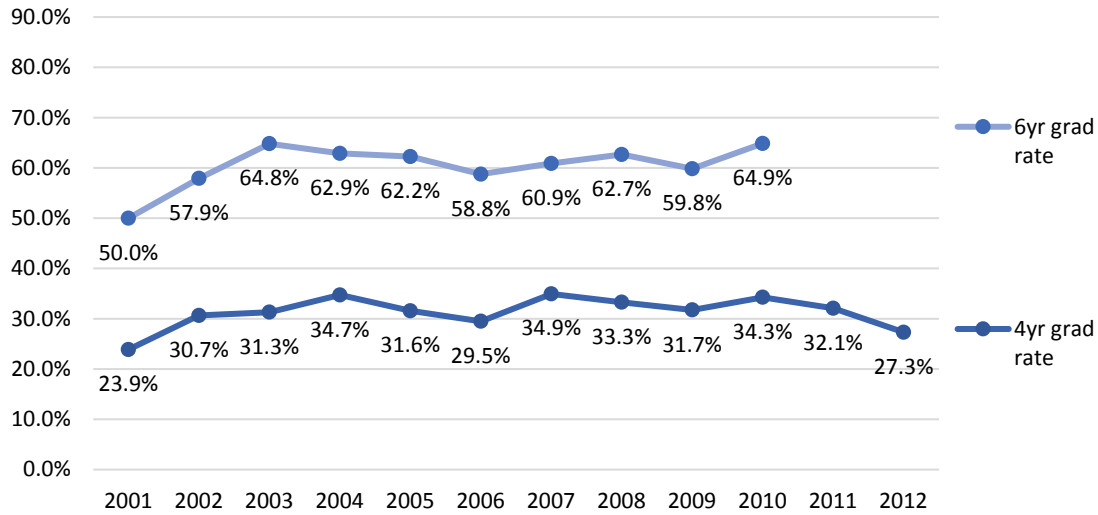
Tri-Cities - Freshman to Sophomore Retention (Students of Color - First Generation - First-time, Full-time)



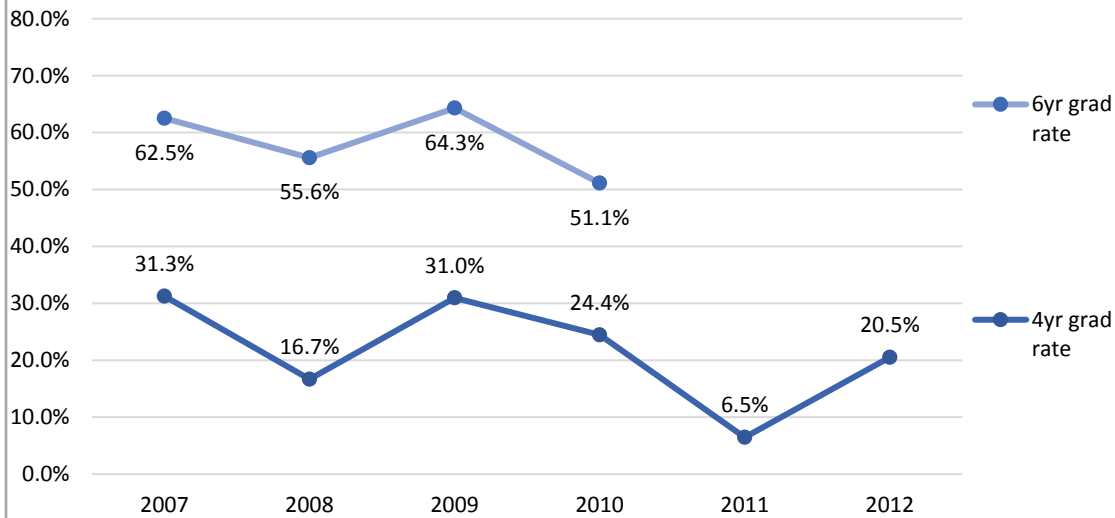
Vancouver Campus - Freshman to Sophomore Retention (Students of Color - First Generation - First-time, Full-time)



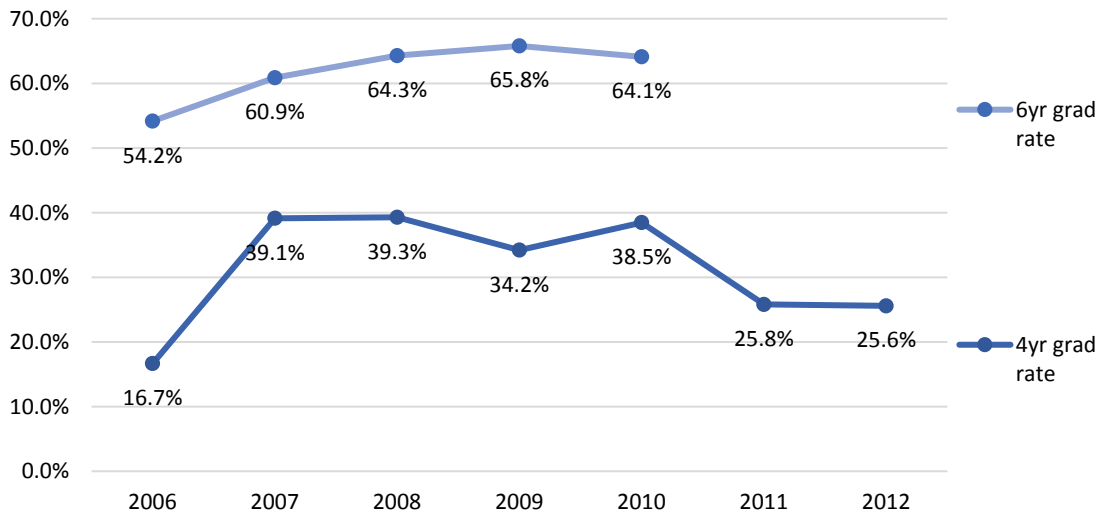
Pullman Campus - 4yr and 6yr Graduation Rate
(Students of Color - First-time, Full-time)



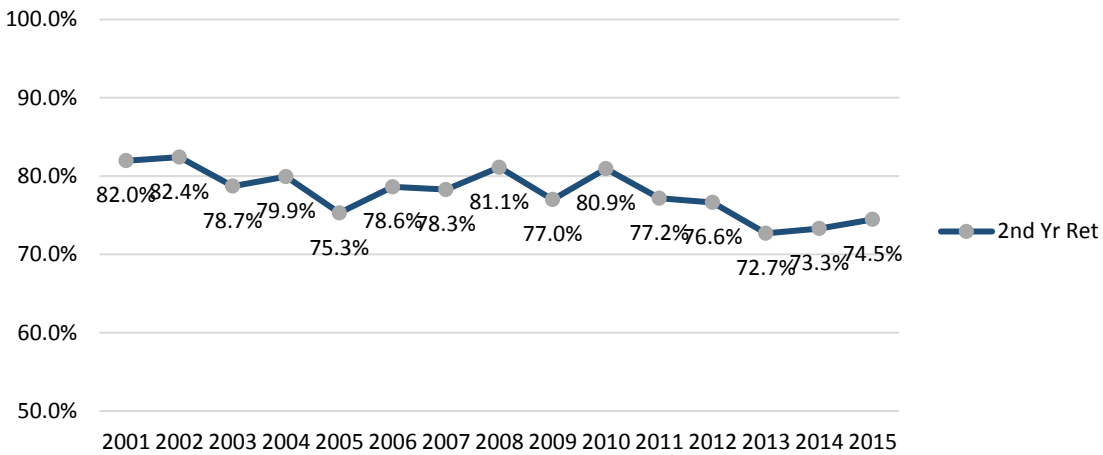
Tri-Cities Campus - 4yr and 6yr Graduation Rate
(Students of Color - First-time, Full-time)



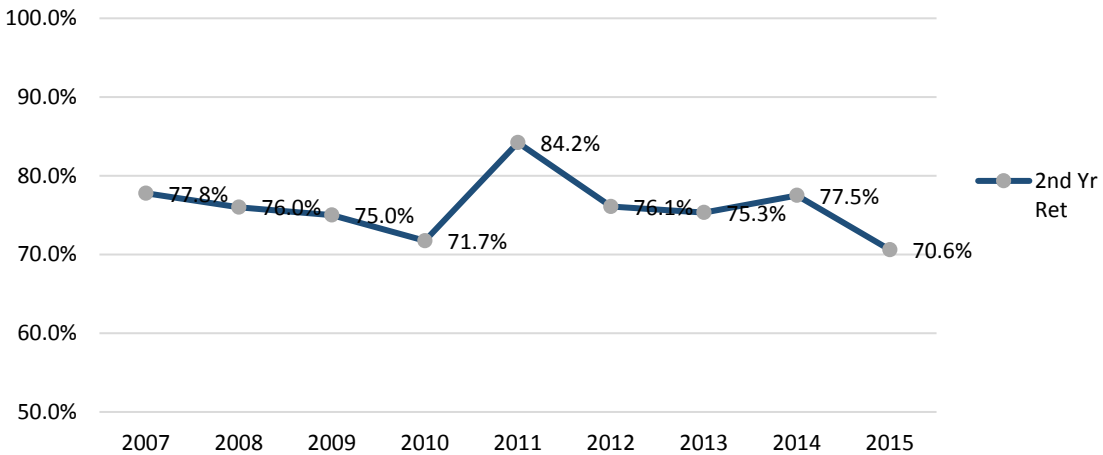
Vancouver Campus - 4yr and 6yr Graduation Rate
(Students of Color - First-time, Full-time)



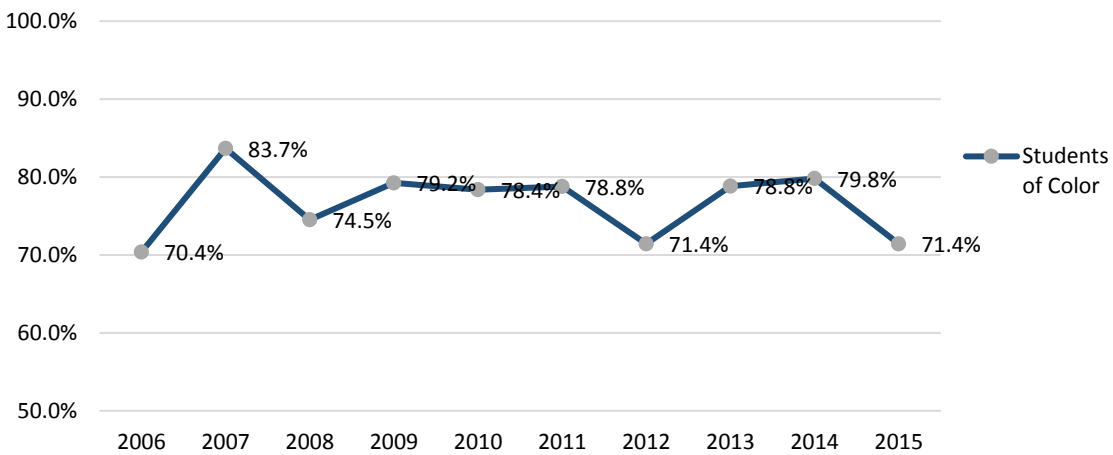
Pullman Campus - Freshman to Sophomore Retention (Low Income - First-time, Full-time)



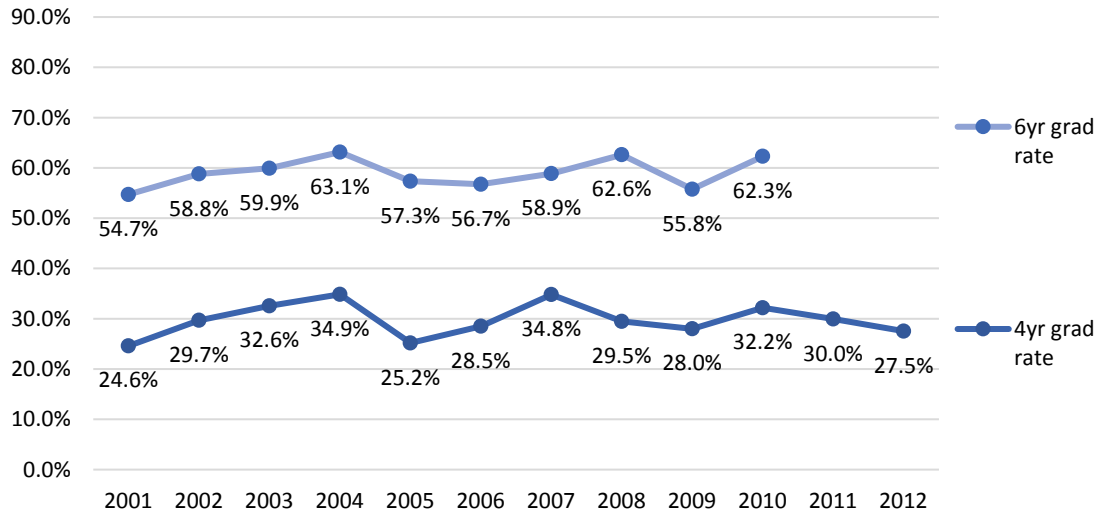
Tri-Cities - Freshman to Sophomore Retention (Low Income - First Generation - First-time, Full-time)



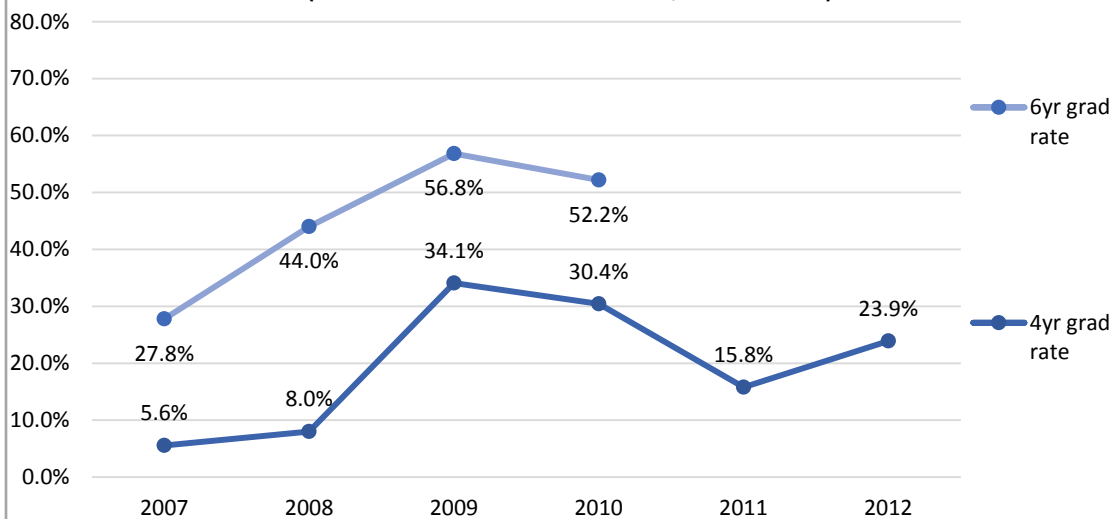
Vancouver Campus - Freshman to Sophomore Retention (Low Income - First Generation - First-time, Full-time)



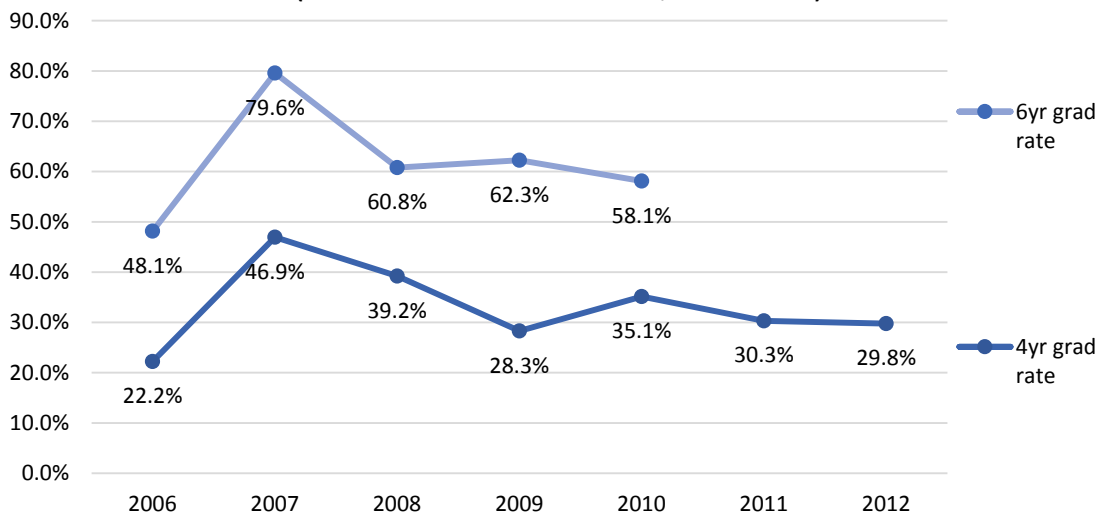
Pullman Campus - 4yr and 6yr Graduation Rate
(Low Income - First-time, Full-time)



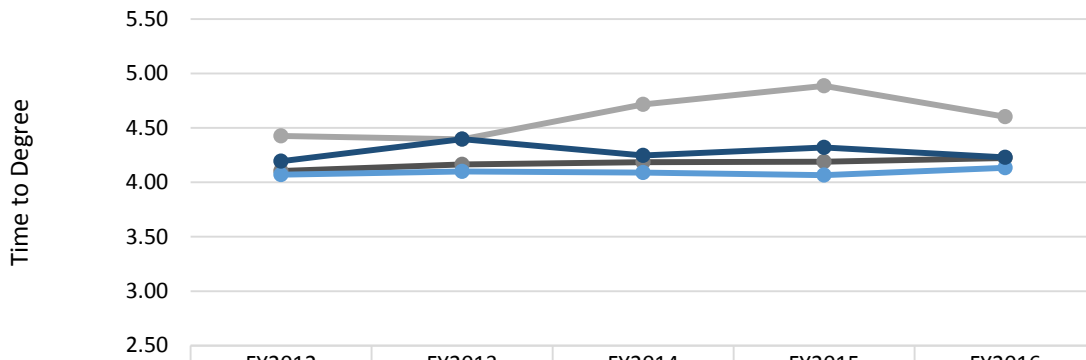
Tri-Cities Campus - 4yr and 6yr Graduation Rate
(Low Income - First-time, Full-time)



Vancouver Campus - 4yr and 6yr Graduation Rate
(Low Income - First-time, Full-time)



Time to Degree Entered as First-time, Full-time Freshman By Campus



	FY2012	FY2013	FY2014	FY2015	FY2016
All WSU	4.10	4.16	4.19	4.19	4.22
Pullman	4.07	4.10	4.09	4.07	4.13
Tri-Cities	4.43	4.39	4.72	4.89	4.60
Vancouver	4.19	4.40	4.25	4.32	4.23