

WSU All Degrees Granted with Percent of Minority and Percent of Women

Fiscal Year	Level	Total Degrees	% of Minority	% of Women
FY2018	Bachelors	5518	28.5%	55.4%
FY2018	Doctoral	336	13.1%	49.7%
FY2018	Masters	899	19.4%	47.9%
FY2018	Professional	261	12.6%	60.9%
FY2017	Bachelors	5597	26.3%	55.0%
FY2017	Doctoral	315	12.7%	46.0%
FY2017	Masters	960	15.7%	47.2%
FY2017	Professional	216	11.1%	67.6%
FY2016	Bachelors	5475	26.4%	55.0%
FY2016	Doctoral	322	9.3%	49.1%
FY2016	Masters	892	18.0%	53.1%
FY2016	Professional	238	12.6%	66.8%
FY2015	Bachelors	5513	22.3%	53.7%
FY2015	Doctoral	290	9.3%	45.2%
FY2015	Masters	741	13.8%	49.9%
FY2015	Professional	183	23.0%	71.6%
FY2014	Bachelors	5054	20.8%	53.9%
FY2014	Doctoral	260	6.9%	45.8%
FY2014	Masters	731	13.1%	53.9%
FY2014	Professional	178	24.7%	64.0%
FY2013	Bachelors	5275	18.5	53.5
FY2013	Doctoral	268	10.1	44.0
FY2013	Masters	800	13.9	59.1
FY2013	Professional	189	25.4	68.3
FY2012	Bachelors	5297	17.1	55.6
FY2012	Doctoral	203	11.3	39.9
FY2012	Masters	802	12.3	55.5
FY2012	Professional	177	28.3	71.2
FY2011	Bachelors	5222	16.0	54.1
FY2011	Doctoral	211	9.5	54.5
FY2011	Masters	763	8.5	54.7
FY2011	Professional	196	23.0	72.4
FY2010	Bachelors	4779	14.6	54.6
FY2010	Doctoral	185	8.7	46.5
FY2010	Masters	748	8.6	58.4
FY2010	Professional	188	16.0	71.8
FY2009	Bachelors	4907	13.6	54.6
FY2009	Doctoral	195	5.6	47.2
FY2009	Masters	711	8.6	58.1
FY2009	Professional	191	17.3	73.3
FY2008	Bachelors	4818	13.9	55.0
FY2008	Doctoral	189	10.6	40.7
FY2008	Masters	724	8.4	56.9
FY2008	Professional	188	11.2	67.0
FY2007	Bachelors	4797	12.5	55.3
FY2007	Doctoral	175	9.7	43.4

FY2007	Masters	702	7.0	51.3
FY2007	Professional	219	11.0	70.3
FY2006	Bachelors	4508	12.6	57.2
FY2006	Doctoral	170	10.6	40.0
FY2006	Masters	739	9.1	55.9
FY2006	Professional	169	13.0	71.0
FY2005	Bachelors	4133	11.1	55.6
FY2005	Doctoral	180	11.1	47.8
FY2005	Masters	731	9.2	54.3
FY2005	Professional	174	16.7	71.3
FY2004	Bachelors	4223	9.7	56.1
FY2004	Doctoral	168	10.1	33.3
FY2004	Masters	752	8.4	54.4
FY2004	Professional	160	16.3	66.3
FY2003	Bachelors	4143	11.2	54.6
FY2003	Doctoral	126	11.9	42.9
FY2003	Masters	760	8.3	53.7
FY2003	Professional	180	14.4	67.8
FY2002	Bachelors	3823	10.8	54.6
FY2002	Doctoral	162	11.7	40.7
FY2002	Masters	706	10.5	53.8
FY2002	Professional	152	18.4	57.2
FY2001	Bachelors	3746	11.4	54.2
FY2001	Doctoral	149	7.4	47.0
FY2001	Masters	737	9.1	55.8
FY2001	Professional	169	18.9	67.5
FY2000	Bachelors	3732	11.4	52.8
FY2000	Doctoral	118	16.1	33.9
FY2000	Masters	675	10.7	53.8
FY2000	Professional	160	14.4	63.8
FY1999	Bachelors	3738	11.3	51.8
FY1999	Doctoral	145	6.9	39.3
FY1999	Masters	687	11.8	54.3
FY1999	Professional	162	11.7	67.3
FY1998	Bachelors	3709	10.1	52.5
FY1998	Doctoral	170	8.2	41.8
FY1998	Masters	735	8.8	51.2
FY1998	Professional	109	5.5	56.9

Notes:

Minority in FY1998-FY2008 included American Indian or Alaska Native, Asian, Black or African American, and Hispanic of any race. Minority in FY2009 forward included American Indian or Alaska Native, Asian, Black or African American, Hispanic of any race, Native Hawaiian or Pacific, and Two or more races). FY=Fiscal Year (e.g. FY2009 include summer 2008, fall 2008, and spring 2009).

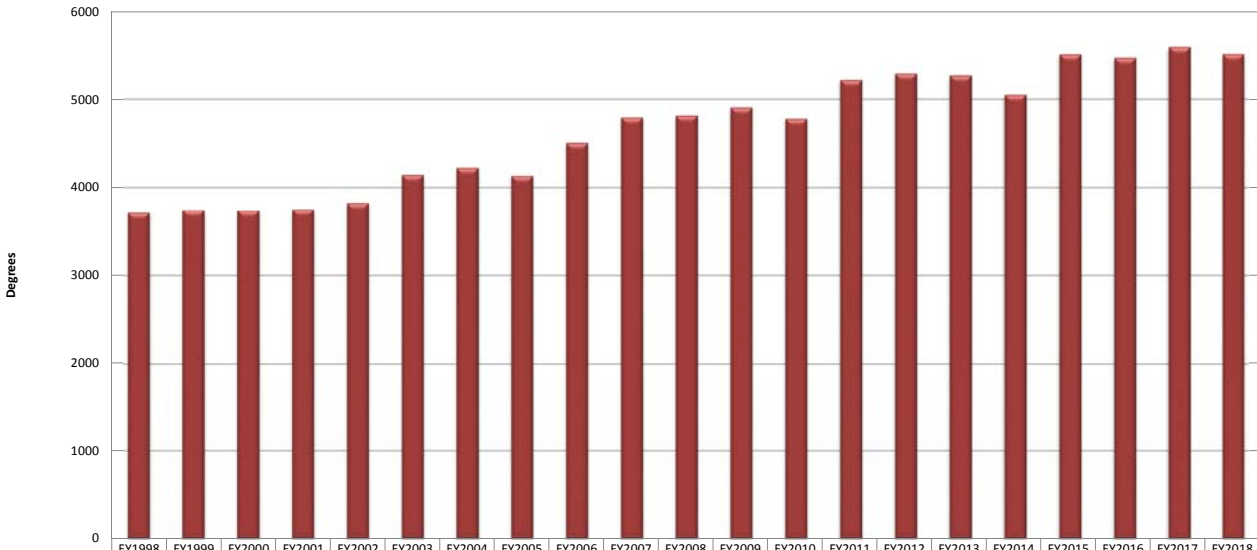
Source: IR Datamart, myWSU.

Institutional Research report date: 10Jan2019

Z:\Website\Data File Folders\Factbook\Degrees\All_Degrees_Granted_by_Level_2018.xls

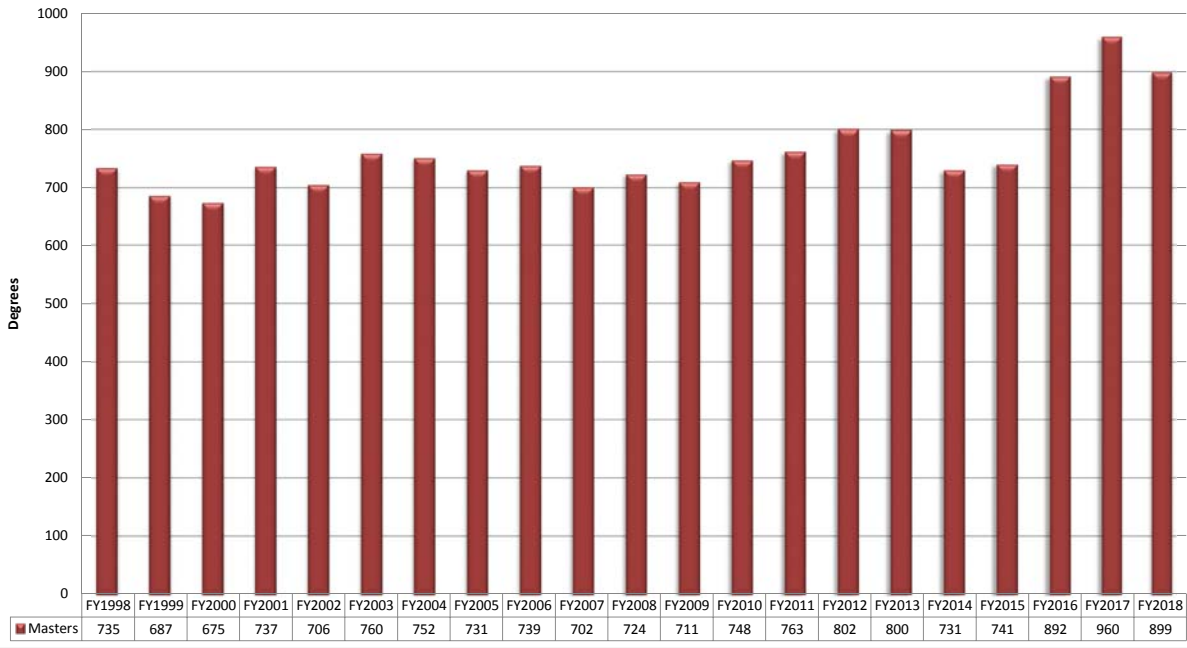
program: Z:\Website\Data File Folders\Factbook\Degrees\All Degrees Granted by Level.sas

WSU Bachelors Degree Granted since Fiscal Year 1998

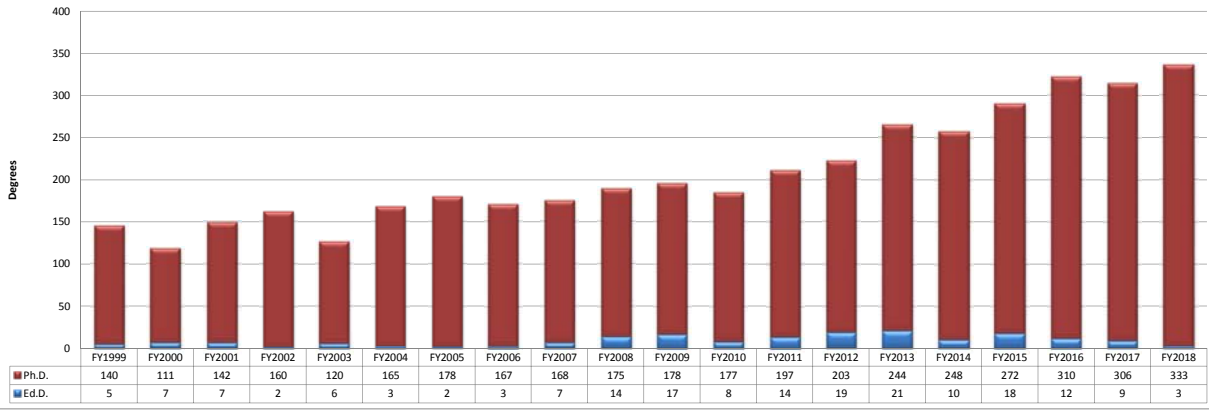


	FY1998	FY1999	FY2000	FY2001	FY2002	FY2003	FY2004	FY2005	FY2006	FY2007	FY2008	FY2009	FY2010	FY2011	FY2012	FY2013	FY2014	FY2015	FY2016	FY2017	FY2018
■ Bachelors	3709	3738	3732	3746	3823	4143	4223	4133	4508	4797	4818	4907	4779	5222	5297	5275	5054	5513	5475	5597	5518

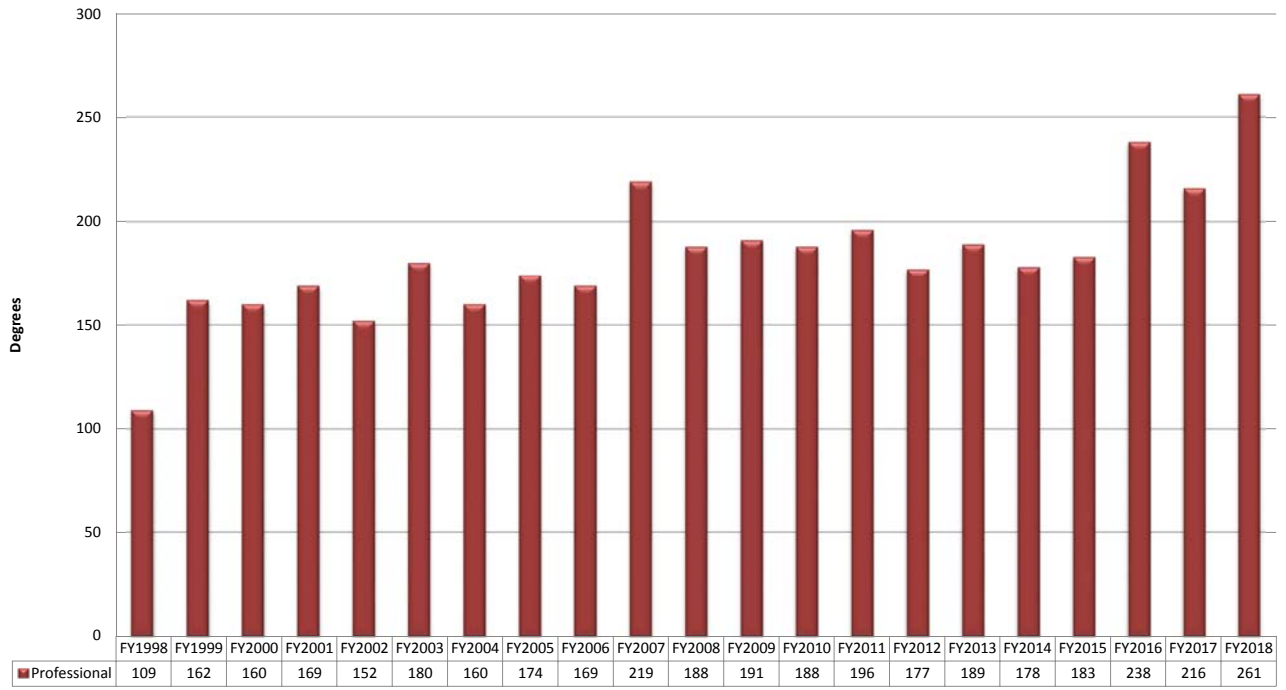
WSU Masters Degree Granted since Fiscal Year 1998



WSU Doctoral Degree Granted since Fiscal Year 1998



WSU Professional Degree Granted since Fiscal Year 1998



WSU Total Degree Granted since Fiscal Year 1998

